



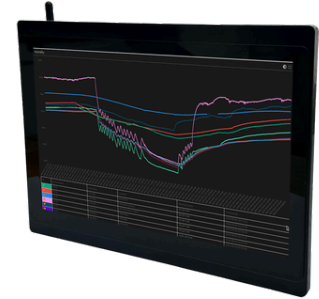
# ALLTEC LR1302 LoRaWAN Gateway

PROTECT ALL TO INVINCIBLE



## Overview

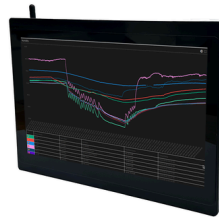
The LR1302 represents the cutting edge in connectivity with our advanced LoRaWAN Gateway, now featuring an intuitive 11.6" touchscreen display and a built-in web interface for easy monitoring and configuration. Engineered for durability and reliable performance, this gateway is perfectly suited for a diverse array of applications, including environmental monitoring, data center, industrial automation, and smart agriculture. Powered by the Semtech® SX1302 baseband LoRa® chip, it delivers extremely low power consumption and outstanding performance. The LR1302 supports 8-channel data transmission, providing enhanced communication capabilities across a wide range of devices.



## Benefit

### Enhanced User Experience

- The integrated 11.6" touch configuration and real-time the device accessible for us



rdly interface, allowing for easy simplifies complex tasks, making

### Reliable and Scalable Comr

- With support for 8 channels, the LR1302 ensures robust and reliable communication with multiple devices simultaneously. Its long-range capability enables effective data transmission over vast distances, making it ideal for both small-scale and large-scale deployments.

### Integrated Environmental Monitoring

- The gateway features an embedded temperature and humidity monitoring system, providing real-time environmental data. This is particularly valuable for applications requiring precise climate control, such as in data centers or agricultural environments.

### Energy Efficiency

- Utilizing the Semtech® SX1302 chip, the LR1302 is designed for low power consumption, which not only extends the operational life of the device but also reduces overall energy costs.

### Versatile Application

- Whether it's for industrial automation, smart agriculture, or monitoring the environment within a data center, the LR1302 is versatile enough to meet the needs of various sectors, ensuring flexibility and adaptability in different scenarios.

## Product Feature

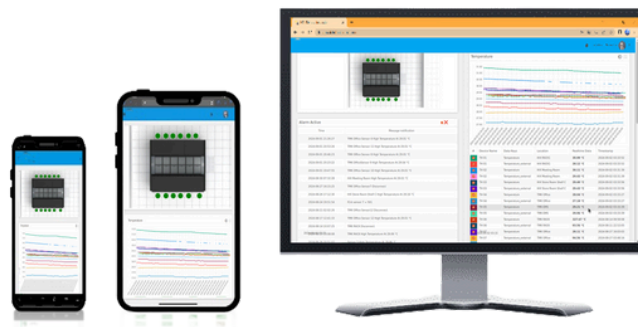
### 11.6" Touchscreen Display

- User-Friendly Interface: Experience seamless interaction with a high-resolution touchscreen display.
- Real-Time Data: Access real-time data and status updates directly on the screen for instant monitoring.



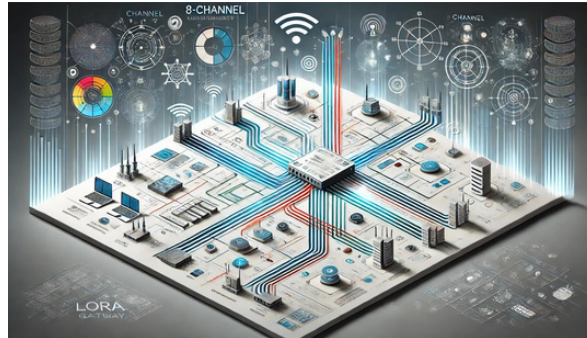
### Built-in Web Interface

- Convenient Configuration: Easily configure and manage the gateway through the built-in web interface.
- Remote Monitoring: Monitor the gateway performance and status remotely, providing flexibility and control from anywhere.



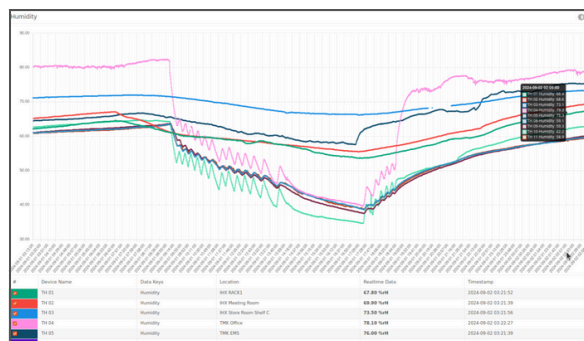
## 8-Channel LoRa Gateway

- High Capacity: Supports 8 channels data transmission to ensure robust and reliable communication with multiple devices.
- Long Range: Extended range capability allows for communication over vast distances, ideal for large-scale deployments.
- Uses SX1250 TX/RX front end with sensitivity to -139 dBm@SF12



## Temperature and Humidity Monitoring

- Integrated Environmental System: Provides real-time monitoring of temperature and humidity.
- Precision Tracking: Perfect for applications requiring accurate climate control and environmental tracking.



## Specifications

Item	Specifications	
Hardware System	CPU	Quad core Cortex-A processors (ARM v8) 64-bit
	Ram	Standard 4GB. Customizable 4GB/8GB
	Storage	32GB. Customizable 32GB/64GB/128GB
Display Interface	Size	11.6 Inch
	Touch type	5 Point Capacitive Touch
	Resolution	1366x768
	Color depth	16M
	Display type	IPS Panel
	Viewing angle	178° Wide viewing angle
LoRaWAN	Chipset	Semtech SX1302 Chip
	Sensitivity	-125dBm @125K/SF7 -139dBm @125K/SF12
	Bandwidth	125/250/500 kHz
	Channel	8 channel data transmission
Ethernet	Ethernet transceiver speed	10/100/1000 Mbps Base-T RJ45
Wi-Fi	wireless	2.4 GHz and 5.0 GHz IEEE 802.11
Power Supply and consumption	Power supply	220VAC / 50Hz
Physical Characteristics	Dimension	294mm x 210mm x 53mm (width x heigh x depth)



## Contact US

IHX (THAILAND) COMPANY LIMITED

Address: 45 Soi Nimitmai30, Samwatawanok,  
khlongsamwa, Bangkok 10510 Thailand

Tel: +66 (0) 21307896

Email: [info@ihx.co.th](mailto:info@ihx.co.th)

Website: [www.ihx.co.th](http://www.ihx.co.th)



LINE Official



[www.ihx.co.th](http://www.ihx.co.th)